

Barton Mews Wimbledon, SW19 8LQ

Offers In Excess Of £895,000 Freehold

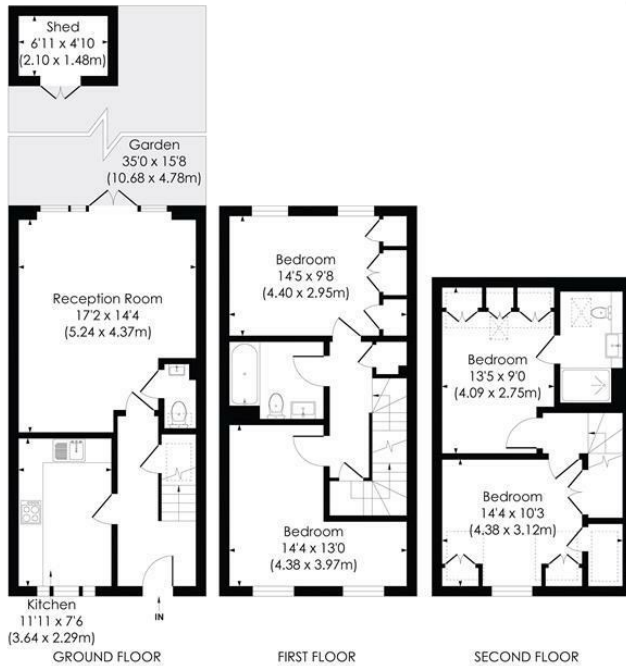


Set within a new build secure gated development on Effra Road (Built circa 2016,) in the South Park Gardens Area of Wimbledon this stylish modern house offers over 1200 Sq Ft of internal space over three floors, comprising: four bedrooms, two luxurious bathrooms, modern kitchen, large lounge/family room opening to a generous rear garden. The enclosed gated forecourt provides a secure and secluded environment, off road parking and secure bicycle storage, situated within close proximity to highly sought after local schools and excellent commuter routes.

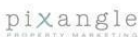
BARTON MEWS, SW19

Approx. Gross Internal Floor Area

1204 Sq. ft/111.86 Sq. m

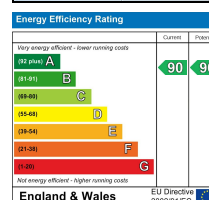


© Pixangle Property Marketing Ltd. info@pixangle.com Tel: 0208 870 2118



This floor plan has been prepared for the purpose of illustration only in accordance with the latest RICS code of measuring practice and is not to scale. All measurements and areas are approximate and whilst every effort has been made to ensure the accuracy of the plan contained here, no responsibility is taken for any error, omission or misstatement.

- South Park Gardens Area
- New Build House (circa 2016)
- Secluded and Secure Gated Development
- Four Bedrooms and Two Luxury Bathrooms
- Allocated Secure Parking & Bicycle Storage
- Modern fitted kitchen
- Maintenance Charge - £877.43 per annum.
- Annual Fixed Rent - £400.00
- EPC Rating B



For Free Mortgage Quote and Best Mortgage Rates, call an Ellisons Mortgage Advisor on 020 8944 9494



Although these particulars are believed to be correct, their accuracy is not guaranteed and they do not form part of any contract.

Celebrating 30 years of successful Sales and Lettings in Merton

